

伺服馬達專用

CBT減速機

BD-A Series



For servo motor
CBT REDUCER



高精度

背隙低於3分、定位精確

High precision

Standard backlash is 3 arc-min, ideal for precision control.

高剛性、高扭矩

使用整體式深溝球軸承，大大提高了剛性和扭矩。

High rigidity & torque

Using whole deep groove ball bearing, it greatly improves the rigidity and Torque.

連接器、軸套方式

可以安裝到世界上任何一臺馬達上。

Adapter-bushing connection

Can be attached to any motor all over the world.

無潤滑脂泄漏

使用高粘度、不易分離的潤滑脂，有效防止潤滑脂泄漏。

No grease leakage

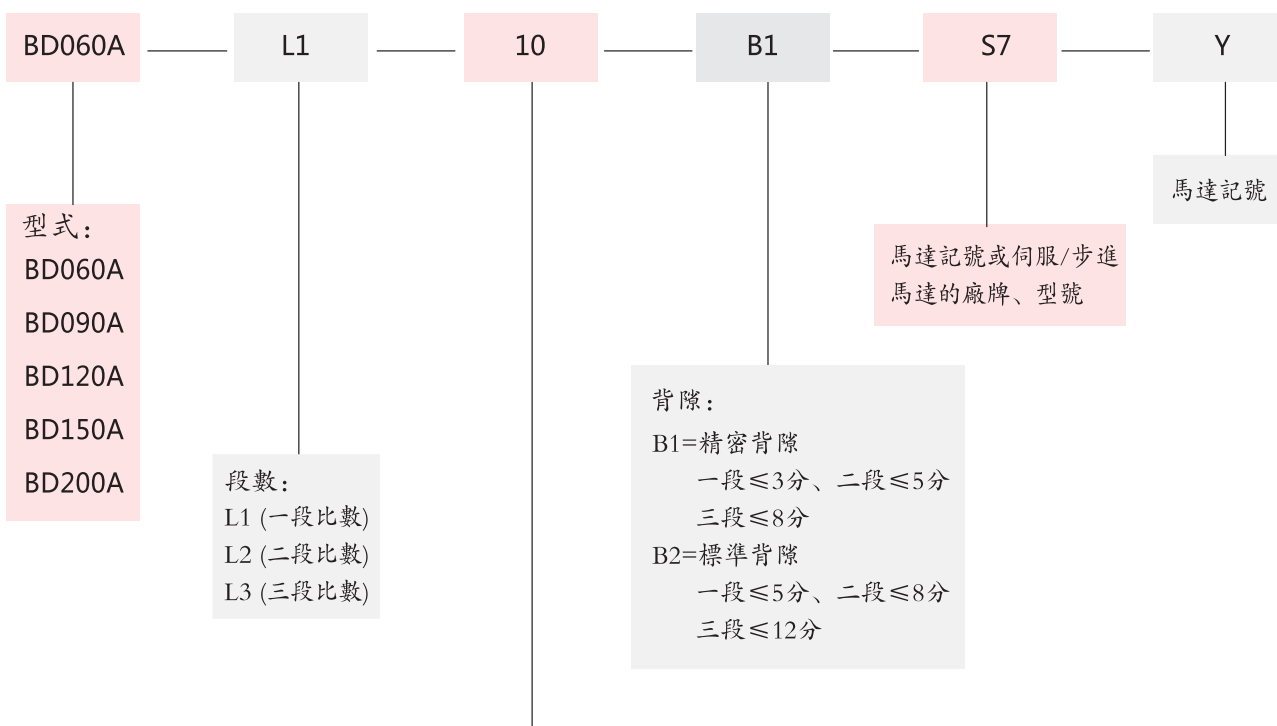
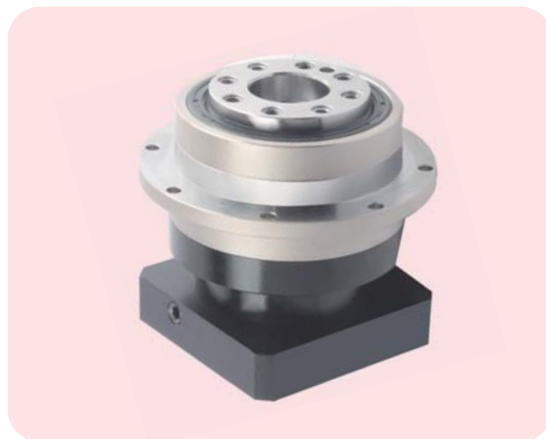
Perfect solution by high viscosity anti-separation grease.

維護方便

在產品壽命期內無需更換潤滑脂，安裝更便捷。

Maintenance-free

No need to replace the grease for the life time.
Can be attached in any position.



| 規格 Specifications | 段數 Stage No | 一段減速比數 Single Stage Ratio(L1) | 二段減速比數 Double Stage Ratio(L2) | 三段減速比數 Triple Stage Ratio(L3) |
|----------------------|----------------|----------------------------------|-------------------------------------|--|
| BD060A | | 4,5,7,10 | 16, 20, 25, 28, 35, 40, 50, 70, 100 | 160, 200, 250, 280, 350, 400, 500, 700, 1000 |
| BD090A | | 4,5,7,10 | 16, 20, 25, 28, 35, 40, 50, 70, 100 | 160, 200, 250, 280, 350, 400, 500, 700, 1000 |
| BD120A | | 4,5,7,10 | 16, 20, 25, 28, 35, 40, 50, 70, 100 | 160, 200, 250, 280, 350, 400, 500, 700, 1000 |
| BD150A | | 4,5,7,10 | 16, 20, 25, 28, 35, 40, 50, 70, 100 | 160, 200, 250, 280, 350, 400, 500, 700, 1000 |
| BD200A | | 4,5,7,10 | 16, 20, 25, 28, 35, 40, 50, 70, 100 | 160, 200, 250, 280, 350, 400, 500, 700, 1000 |



BD060A

| 速比 | Ratio | | 4 | 5 | 7 | 10 | 16 | 20 | 25 | 28 | 35 | 40 | 50 | 70 | 100 |
|------------------|----------------------------------|--------------------|----------------------------|------|------|------|------|------|------|------|------|------|------|------|------|
| 額定輸出扭矩 T_{2N} | Nominal Output Torque T_{2N} | Nm | 48 | 60 | 35 | 28 | 48 | 48 | 60 | 35 | 35 | 28 | 28 | 28 | 28 |
| 急停扭矩 T_{2NOT} | Emergency Stop Torque T_{2NOT} | Nm | 3倍額定輸出扭矩 | | | | | | | | | | | | |
| 額定輸入轉速 n_{1N} | Nominal input Speed n_{1N} | rpm | 5000 | | | | | | | | | | | | |
| 最高輸入轉速 n_{1B} | Maximum input Speed n_{1B} | rpm | 10000 | | | | | | | | | | | | |
| 扭轉剛性 | Torsional Rigidity | Nm/arcmin | 13 | | | | | | | | | | | | |
| 容許軸向負荷 F_{2rB} | Permitted radial load F_{2rB} | N | 2000 | | | | | | | | | | | | |
| 使用壽命 | Service Life | hr | 20000 (連續運轉壽命減半) | | | | | | | | | | | | |
| 噪音值 | Noise | dB | ≤60 (輸入轉速=3000rpm、空載、距離1m) | | | | | | | | | | | | |
| 使用溫度 | Operating Temp | °C | -10 ~ +90°C | | | | | | | | | | | | |
| 防護等級 | Degree of Gearbox Protection | | IP65 | | | | | | | | | | | | |
| 潤滑 | Lubrication | | 合成潤滑油脂 (終身潤滑) | | | | | | | | | | | | |
| 轉動慣量 J_1 | Mass Moments of inertia J_1 | kg·cm ² | 0.14 | 0.14 | 0.13 | 0.13 | 0.06 | 0.06 | 0.06 | 0.06 | 0.06 | 0.06 | 0.06 | 0.06 | 0.06 |
| 重量 | Weight | Kg | 1.2 | | | | | | 1.6 | | | | | | |
| 精密背隙 B1 | Precision Backlash B1 | arcmin | ≤3 | | | | | | ≤5 | | | | | | |
| 標準背隙 B2 | Standard Backlash B2 | arcmin | ≤5 | | | | | | ≤8 | | | | | | |
| 效率 η | Efficiency η | % | ≥97% | | | | | | ≥94% | | | | | | |

BD090A

| 速比 | Ratio | | 4 | 5 | 7 | 10 | 16 | 20 | 25 | 28 | 35 | 40 | 50 | 70 | 100 |
|------------------|----------------------------------|--------------------|----------------------------|------|------|------|-----|------|------|-----|------|------|------|------|------|
| 額定輸出扭矩 T_{2N} | Nominal Output Torque T_{2N} | Nm | 110 | 135 | 95 | 80 | 110 | 110 | 135 | 95 | 95 | 80 | 80 | 80 | 80 |
| 急停扭矩 T_{2NOT} | Emergency Stop Torque T_{2NOT} | Nm | 3倍額定輸出扭矩 | | | | | | | | | | | | |
| 額定輸入轉速 n_{1N} | Nominal input Speed n_{1N} | rpm | 4000 | | | | | | | | | | | | |
| 最高輸入轉速 n_{1B} | Maximum input Speed n_{1B} | rpm | 8000 | | | | | | | | | | | | |
| 扭轉剛性 | Torsional Rigidity | Nm/arcmin | 31 | | | | | | | | | | | | |
| 容許軸向負荷 F_{2rB} | Permitted radial load F_{2rB} | N | 2300 | | | | | | | | | | | | |
| 使用壽命 | Service Life | hr | 20000 (連續運轉壽命減半) | | | | | | | | | | | | |
| 噪音值 | Noise | dB | ≤60 (輸入轉速=3000rpm、空載、距離1m) | | | | | | | | | | | | |
| 使用溫度 | Operating Temp | °C | -10 ~ +90°C | | | | | | | | | | | | |
| 防護等級 | Degree of Gearbox Protection | | IP65 | | | | | | | | | | | | |
| 潤滑 | Lubrication | | 合成潤滑油脂 (終身潤滑) | | | | | | | | | | | | |
| 轉動慣量 J_1 | Mass Moments of inertia J_1 | kg·cm ² | 0.48 | 0.47 | 0.45 | 0.44 | 0.5 | 0.47 | 0.47 | 0.5 | 0.47 | 0.47 | 0.47 | 0.13 | 0.13 |
| 重量 | Weight | Kg | 3.2 | | | | | | 3.8 | | | | | | |
| 精密背隙 B1 | Precision Backlash B1 | arcmin | ≤3 | | | | | | ≤5 | | | | | | |
| 標準背隙 B2 | Standard Backlash B2 | arcmin | ≤5 | | | | | | ≤8 | | | | | | |
| 效率 η | Efficiency η | % | ≥97% | | | | | | ≥94% | | | | | | |



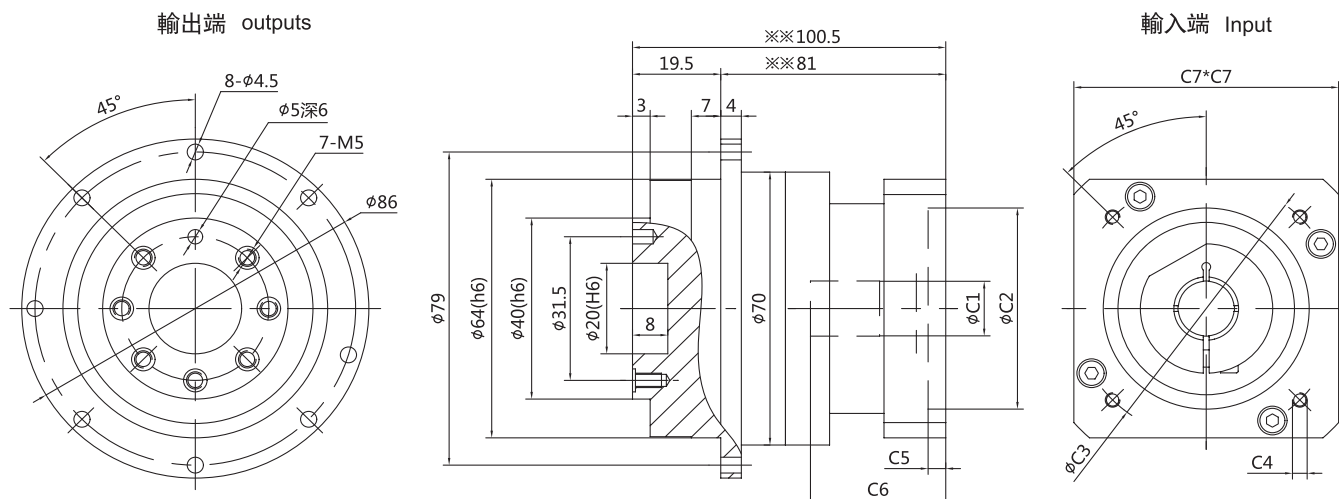
| BD 120A | | | | | | | | | | | | | | | | |
|-------------------------|---|--------------------|---------------------------|------|------|------|-----|------|------|-----|------|------|------|------|------|--|
| 速 比 | Ratio | | 4 | 5 | 7 | 10 | 16 | 20 | 25 | 28 | 35 | 40 | 50 | 70 | 100 | |
| 額定輸出扭矩 T _{2N} | Nominal Output Torque T _{2N} | Nm | 235 | 290 | 255 | 140 | 235 | 235 | 290 | 255 | 255 | 140 | 140 | 140 | 140 | |
| 急停扭矩 T _{2NOT} | Emergency Stop Torque T _{2NOT} | Nm | 3倍額定輸出扭矩 | | | | | | | | | | | | | |
| 額定輸入轉速 n _{1N} | Nominal input Speed n _{1N} | rpm | 4000 | | | | | | | | | | | | | |
| 最高輸入轉速 n _{1B} | Maximum input Speed n _{1B} | rpm | 8000 | | | | | | | | | | | | | |
| 扭轉剛性 | Torsional Rigidity | Nm/arcmin | 82 | | | | | | | | | | | | | |
| 容許軸向負荷 F _{2rB} | Permitted radial load F _{2rB} | N | 4600 | | | | | | | | | | | | | |
| 使用壽命 | Service Life | hr | 20000（連續運轉壽命減半） | | | | | | | | | | | | | |
| 噪音值 | Noise | dB | ≤65（輸入轉速=3000rpm、空載、距離1m） | | | | | | | | | | | | | |
| 使用溫度 | Operating Temp | ℃ | -10 ~ +90℃ | | | | | | | | | | | | | |
| 防護等級 | Degree of Gearbox Protection | | IP65 | | | | | | | | | | | | | |
| 潤滑 | Lubrication | | 合成潤滑油脂（終身潤滑） | | | | | | | | | | | | | |
| 轉動慣量 J ₁ | Mass Moments of inertia J ₁ | kg·cm ² | 2.74 | 2.71 | 2.65 | 2.57 | 2.7 | 2.57 | 2.57 | 2.7 | 2.57 | 2.57 | 0.44 | 0.44 | 0.44 | |
| 重量 | Weight | Kg | 5.8 | | | | | 7.6 | | | | | | | | |
| 精密背隙 B1 | Precision Backlash B1 | arcmin | ≤3 | | | | | ≤5 | | | | | | | | |
| 標準背隙 B2 | Standard Backlash B2 | arcmin | ≤5 | | | | | ≤8 | | | | | | | | |
| 效率 η | Efficiency η | % | ≥97% | | | | | ≥94% | | | | | | | | |

| BD150A | | | | | | | | | | | | | | | | |
|-------------------------|---|--------------------|---------------------------|------|------|------|------|------|------|------|------|------|------|------|------|--|
| 速 比 | Ratio | | 4 | 5 | 7 | 10 | 16 | 20 | 25 | 28 | 35 | 40 | 50 | 70 | 100 | |
| 額定輸出扭矩 T _{2N} | Nominal Output Torque T _{2N} | Nm | 470 | 505 | 355 | 305 | 470 | 470 | 505 | 355 | 355 | 305 | 305 | 305 | 305 | |
| 急停扭矩 T _{2NOT} | Emergency Stop Torque T _{2NOT} | Nm | 3倍額定輸出扭矩 | | | | | | | | | | | | | |
| 額定輸入轉速 n _{1N} | Nominal input Speed n _{1N} | rpm | 3000 | | | | | | | | | | | | | |
| 最高輸入轉速 n _{1B} | Maximum input Speed n _{1B} | rpm | 6000 | | | | | | | | | | | | | |
| 扭轉剛性 | Torsional Rigidity | Nm/arcmin | 151 | | | | | | | | | | | | | |
| 容許軸向負荷 F _{2rB} | Permitted radial load F _{2rB} | N | 6000 | | | | | | | | | | | | | |
| 使用壽命 | Service Life | hr | 20000（連續運轉壽命減半） | | | | | | | | | | | | | |
| 噪音值 | Noise | dB | ≤65（輸入轉速=3000rpm、空載、距離1m） | | | | | | | | | | | | | |
| 使用溫度 | Operating Temp | ℃ | -10 ~ +90℃ | | | | | | | | | | | | | |
| 防護等級 | Degree of Gearbox Protection | | IP65 | | | | | | | | | | | | | |
| 潤滑 | Lubrication | | 合成潤滑油脂（終身潤滑） | | | | | | | | | | | | | |
| 轉動慣量 J ₁ | Mass Moments of inertia J ₁ | kg·cm ² | 7.54 | 7.42 | 7.14 | 7.03 | 7.03 | 7.03 | 7.03 | 7.03 | 7.03 | 2.57 | 2.57 | 2.57 | 2.57 | |
| 重量 | Weight | Kg | 12.2 | | | | | 16.3 | | | | | | | | |
| 精密背隙 B1 | Precision Backlash B1 | arcmin | ≤3 | | | | | ≤5 | | | | | | | | |
| 標準背隙 B2 | Standard Backlash B2 | arcmin | ≤5 | | | | | ≤8 | | | | | | | | |
| 效率 η | Efficiency η | % | ≥97% | | | | | ≥94% | | | | | | | | |



| BD200A | | | | | | | | | | | | | | | |
|------------------|----------------------------------|--------------------|----------------------------|-------|-------|-------|-------|-------|-------|-------|-------|------|------|------|------|
| 速 比 | Ratio | | 4 | 5 | 7 | 10 | 16 | 20 | 25 | 28 | 35 | 40 | 50 | 70 | 100 |
| 額定輸出扭矩 T_{2N} | Nominal Output Torque T_{2N} | Nm | 900 | 950 | 850 | 750 | 900 | 900 | 950 | 850 | 850 | 750 | 750 | 750 | 750 |
| 急停扭矩 T_{2NOT} | Emergency Stop Torque T_{2NOT} | Nm | 3倍額定輸出扭矩 | | | | | | | | | | | | |
| 額定輸入轉速 n_{1N} | Nominal input Speed n_{1N} | rpm | 3000 | | | | | | | | | | | | |
| 最高輸入轉速 n_{1B} | Maximum input Speed n_{1B} | rpm | 6000 | | | | | | | | | | | | |
| 扭轉剛性 | Torsional Rigidity | Nm/arcmin | 3064 | | | | | | | | | | | | |
| 容許軸向負荷 F_{2rB} | Permitted radial load F_{2rB} | N | 5400 | | | | | | | | | | | | |
| 使用壽命 | Service Life | hr | 20000 (連續運轉壽命減半) | | | | | | | | | | | | |
| 噪音值 | Noise | dB | ≤65 (輸入轉速=1500rpm、空載、距離1m) | | | | | | | | | | | | |
| 使用溫度 | Operating Temp | °C | -10 ~ +90°C | | | | | | | | | | | | |
| 防護等級 | Degree of Gearbox Protection | | IP65 | | | | | | | | | | | | |
| 潤滑 | Lubrication | | 合成潤滑油脂 (終身潤滑) | | | | | | | | | | | | |
| 轉動慣量 J_1 | Mass Moments of inertia J_1 | kg·cm ² | 23.67 | 23.29 | 22.48 | 22.51 | 22.51 | 22.51 | 22.51 | 22.51 | 22.51 | 7.03 | 7.03 | 7.03 | 7.03 |
| 重量 | Weight | Kg | 32.3 | | | | | 37.6 | | | | | | | |
| 精密背隙 B1 | Precision Backlash B1 | arcmin | ≤3 | | | | | ≤5 | | | | | | | |
| 標準背隙 B2 | Standard Backlash B2 | arcmin | ≤5 | | | | | ≤8 | | | | | | | |
| 效率 η | Efficiency η | % | ≥97% | | | | | ≥94% | | | | | | | |

● BD060A-L1 (一段)



單位: mm

| 馬達記號 Motor Mark | S1 | S2 | S3 | S4 | S5 | S6 | S7 | S8 |
|---------------------|-----|-----|----|----|----|----|----|------|
| 輸入端尺寸 Input Size | | | | | | | | |
| ※C1(H) | 8 | 8 | 11 | 14 | 14 | 14 | 14 | 6.35 |
| ※C2(H) | 30 | 30 | 50 | 50 | 50 | 70 | 70 | 38.1 |
| ※C3 | 45 | 46 | 70 | 70 | 70 | 90 | 90 | 66.7 |
| ※C4 | M3 | M4 | M4 | M4 | M5 | M5 | M6 | M4 |
| ※C5 | 3.5 | 3.5 | 6 | 6 | 6 | 6 | 6 | 3.5 |
| ※C6 | 32 | 32 | 32 | 32 | 32 | 40 | 40 | 32 |
| ※C7 | 60 | 60 | 60 | 60 | 60 | 80 | 80 | 60 |

注:

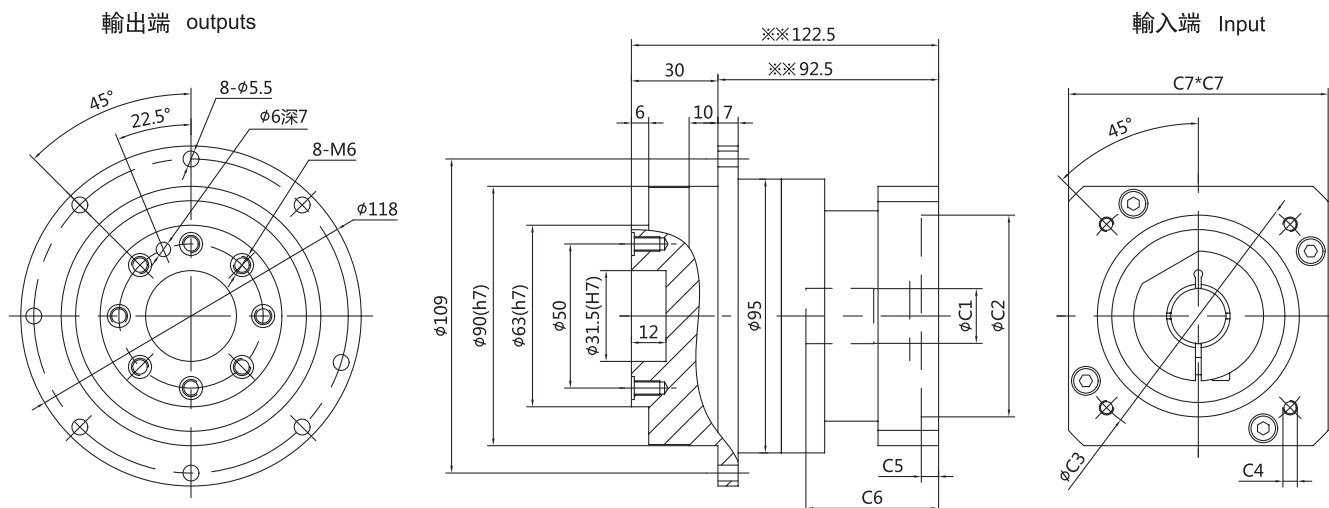
1. 帶※尺寸可依據馬達實際尺寸定制，如有需要請聯系我司。
2. 帶※※為最大尺寸，隨安裝馬達的不同而尺寸會有所變化。

Note:

1. “※” The size can be customized according to the actual size of the motor. Please contact our company if necessary
2. “※※” For maximum size, the mounting motors vary in size.



● BD090A-L1 (一段)



單位: mm

| 馬達記號 Motor Mark 輸入端尺寸 Input Size | S1 | S2 | S3 | S4 | S5 | S6 | S7 | S8 | S9 | S10 |
|---|-----|-----|-----|----|----|-----|----|-----|-----|-----|
| ※C1(H) | 11 | 14 | 14 | 14 | 16 | 16 | 19 | 19 | 22 | 24 |
| ※C2(H) | 50 | 50 | 50 | 70 | 70 | 80 | 70 | 110 | 110 | 110 |
| ※C3 | 70 | 70 | 70 | 90 | 90 | 100 | 90 | 145 | 145 | 145 |
| ※C4 | M4 | M4 | M5 | M6 | M6 | M6 | M6 | M8 | M8 | M8 |
| ※C5 | 3.5 | 3.5 | 3.5 | 6 | 6 | 6 | 6 | 10 | 10 | 10 |
| ※C6 | 32 | 32 | 32 | 45 | 45 | 45 | 45 | 60 | 60 | 60 |
| ※C7 | 60 | 60 | 60 | 90 | 90 | 90 | 90 | 130 | 130 | 130 |

注:

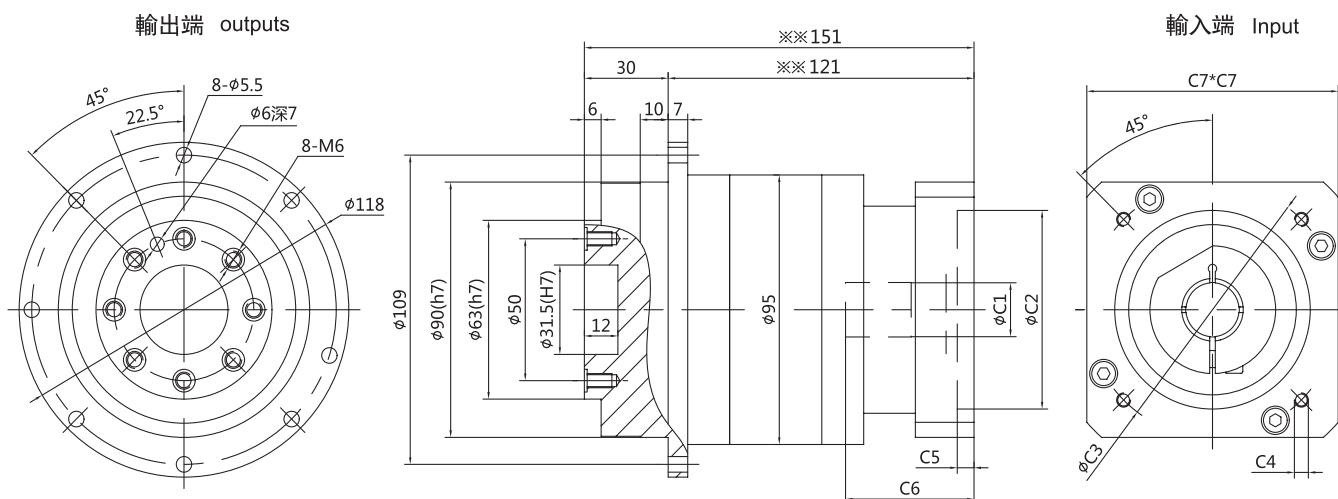
1. 帶※尺寸可依據馬達實際尺寸定制, 如有需要請聯系我司。
2. 帶※※為最大尺寸, 隨安裝馬達的不同而尺寸會有所變化。

Note:

1. "※" The size can be customized according to the actual size of the motor. Please contact our company if necessary
2. "※※" For maximum size, the mounting motors vary in size.



● BD090A-L2 (二段)



單位: mm

| 馬達記號 Motor Mark 輸入端尺寸 Input Size | S1 | S2 | S3 | S4 | S5 | S6 | S7 | S8 | S9 | S10 |
|---|-----|-----|-----|----|----|-----|----|-----|-----|-----|
| $\times C1$ (H) | 11 | 14 | 14 | 14 | 16 | 16 | 19 | 19 | 22 | 24 |
| $\times C2$ (H) | 50 | 50 | 50 | 70 | 70 | 80 | 70 | 110 | 110 | 110 |
| $\times C3$ | 70 | 70 | 70 | 90 | 90 | 100 | 90 | 145 | 145 | 145 |
| $\times C4$ | M4 | M4 | M5 | M6 | M6 | M6 | M6 | M8 | M8 | M8 |
| $\times C5$ | 3.5 | 3.5 | 3.5 | 6 | 6 | 6 | 6 | 10 | 10 | 10 |
| $\times C6$ | 32 | 32 | 32 | 45 | 45 | 45 | 45 | 60 | 60 | 60 |
| $\times C7$ | 60 | 60 | 60 | 90 | 90 | 90 | 90 | 130 | 130 | 130 |

注:

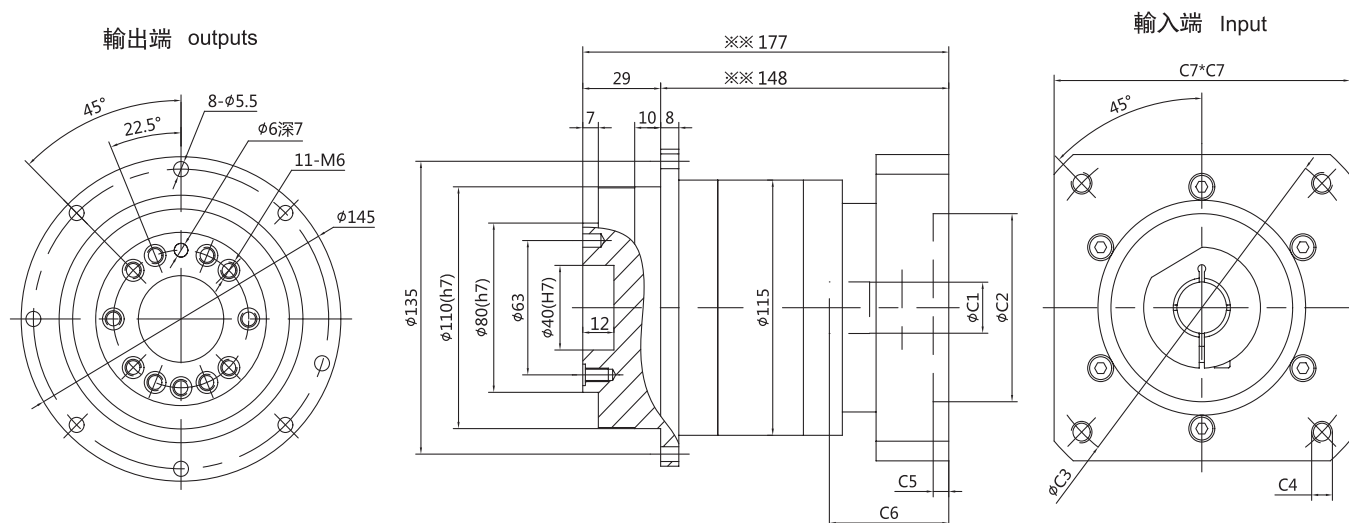
1. 帶 \times 尺寸可依據馬達實際尺寸定制, 如有需要請聯系我司。
2. 帶 $\times \times$ 為最大尺寸, 隨安裝馬達的不同而尺寸會有所變化。

Note:

1. “ \times ” The size can be customized according to the actual size of the motor. Please contact our company if necessary
2. “ $\times \times$ ” For maximum size, the mounting motors vary in size.



● BD120A-L2 (二段)



單位: mm

| 馬達記號 Motor Mark 輸入端尺寸 Input Size | S1 | S2 | S3 | S4 | S5 | S6 | S7 | S8 | S9 | S10 |
|---|----|-----|----|-----|-----|-----|-----|-----|-----|-----|
| ※C1(H) | 16 | 16 | 19 | 19 | 19 | 22 | 22 | 22 | 24 | 28 |
| ※C2(H) | 70 | 80 | 70 | 95 | 110 | 95 | 110 | 110 | 110 | 110 |
| ※C3 | 90 | 100 | 90 | 115 | 145 | 115 | 130 | 145 | 145 | 145 |
| ※C4 | M6 | M6 | M6 | M8 | M8 | M8 | M8 | M8 | M8 | M8 |
| ※C5 | 6 | 6 | 6 | 8 | 8 | 8 | 8 | 8 | 8 | 8 |
| ※C6 | 52 | 52 | 52 | 62 | 62 | 62 | 62 | 62 | 62 | 62 |
| ※C7 | 90 | 90 | 90 | 130 | 130 | 130 | 130 | 130 | 130 | 130 |

注:

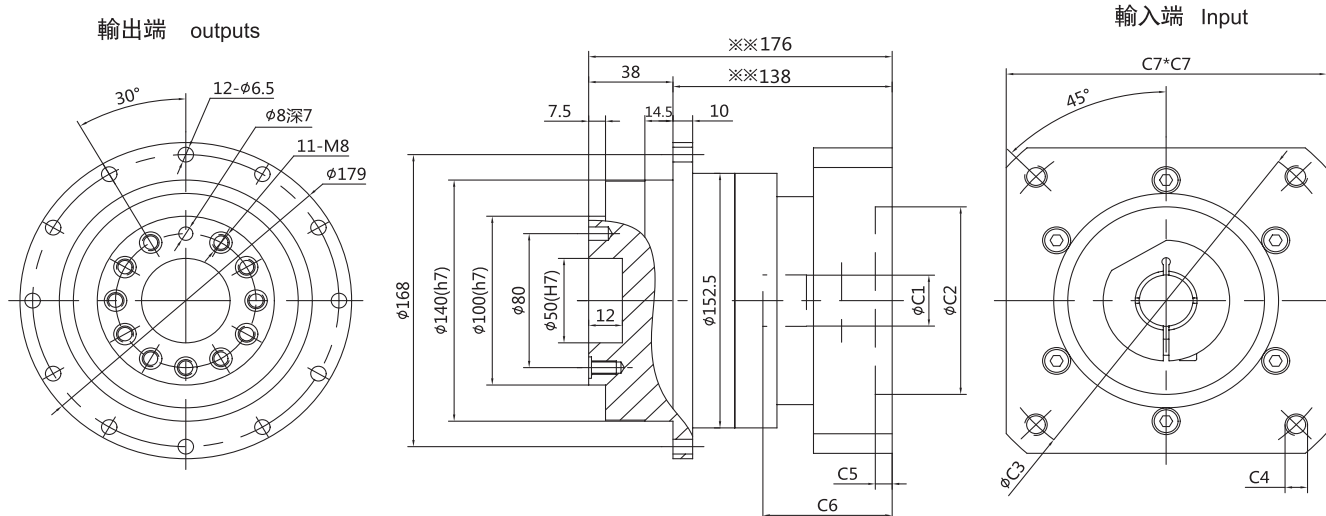
1. 帶※尺寸可依據馬達實際尺寸定制, 如有需要請聯系我司。
2. 帶※※為最大尺寸, 隨安裝馬達的不同而尺寸會有所變化。

Note:

1. "※" The size can be customized according to the actual size of the motor. Please contact our company if necessary
2. "※※" For maximum size, the mounting motors vary in size.



● BD150A-L1 (一段)



單位: mm

| 馬達記號 Motor Mark 輸入端尺寸 Input Size | S1 | S2 | S3 | S4 | S5 | S6 | S7 | S8 | S9 | S10 |
|---|-----|-----|-----|-----|-----|-----|-----|-----|-------|-------|
| ※C1(H) | 19 | 19 | 22 | 22 | 22 | 24 | 28 | 32 | 35 | 42 |
| ※C2(H) | 95 | 110 | 95 | 110 | 110 | 110 | 110 | 130 | 114.3 | 114.3 |
| ※C3 | 115 | 145 | 115 | 130 | 145 | 145 | 145 | 165 | 200 | 200 |
| ※C4 | M8 | M8 | M8 | M8 | M8 | M8 | M8 | M10 | M12 | M12 |
| ※C5 | 8 | 8 | 8 | 8 | 8 | 8 | 8 | 8 | 8 | 8 |
| ※C6 | 74 | 74 | 74 | 74 | 74 | 74 | 74 | 82 | 82 | 82 |
| ※C7 | 130 | 130 | 130 | 130 | 130 | 130 | 130 | 180 | 180 | 180 |

注:

1. 帶※尺寸可依據馬達實際尺寸定制, 如有需要請聯系我司。
2. 帶※※為最大尺寸, 隨安裝馬達的不同而尺寸會有所變化。

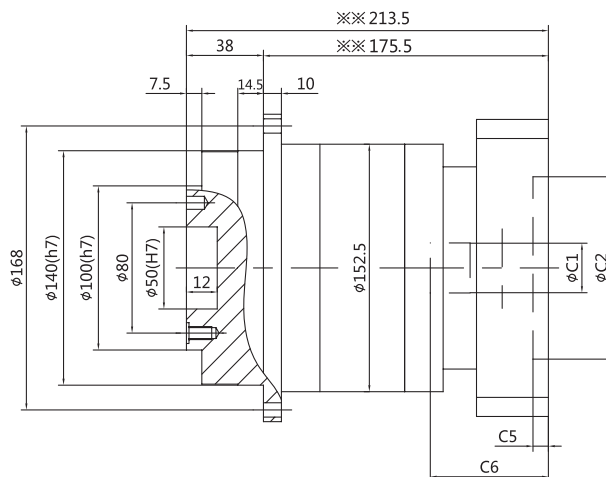
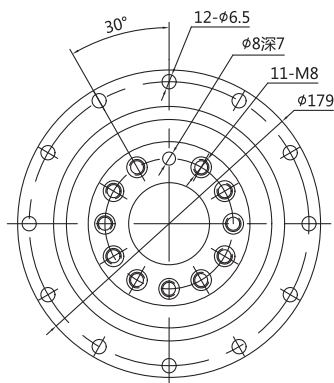
Note:

1. “※” The size can be customized according to the actual size of the motor. Please contact our company if necessary
2. “※※” For maximum size, the mounting motors vary in size.

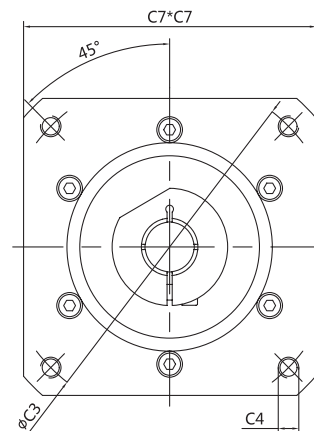


● BD150A-L2 (二段)

輸出端 outputs



輸入端 Input



單位: mm

| 馬達記號 Motor Mark 輸入端尺寸 Input Size | S1 | S2 | S3 | S4 | S5 | S6 | S7 | S8 | S9 | S10 |
|---|-----|-----|-----|-----|-----|-----|-----|-----|-------|-------|
| ※C1(H) | 19 | 19 | 22 | 22 | 22 | 24 | 28 | 32 | 35 | 42 |
| ※C2(H) | 95 | 110 | 95 | 110 | 110 | 110 | 110 | 130 | 114.3 | 114.3 |
| ※C3 | 115 | 145 | 115 | 130 | 145 | 145 | 145 | 165 | 200 | 200 |
| ※C4 | M8 | M8 | M8 | M8 | M8 | M8 | M8 | M10 | M12 | M12 |
| ※C5 | 8 | 8 | 8 | 8 | 8 | 8 | 8 | 8 | 8 | 8 |
| ※C6 | 74 | 74 | 74 | 74 | 74 | 74 | 74 | 82 | 82 | 82 |
| ※C7 | 130 | 130 | 130 | 130 | 130 | 130 | 130 | 180 | 180 | 180 |

注:

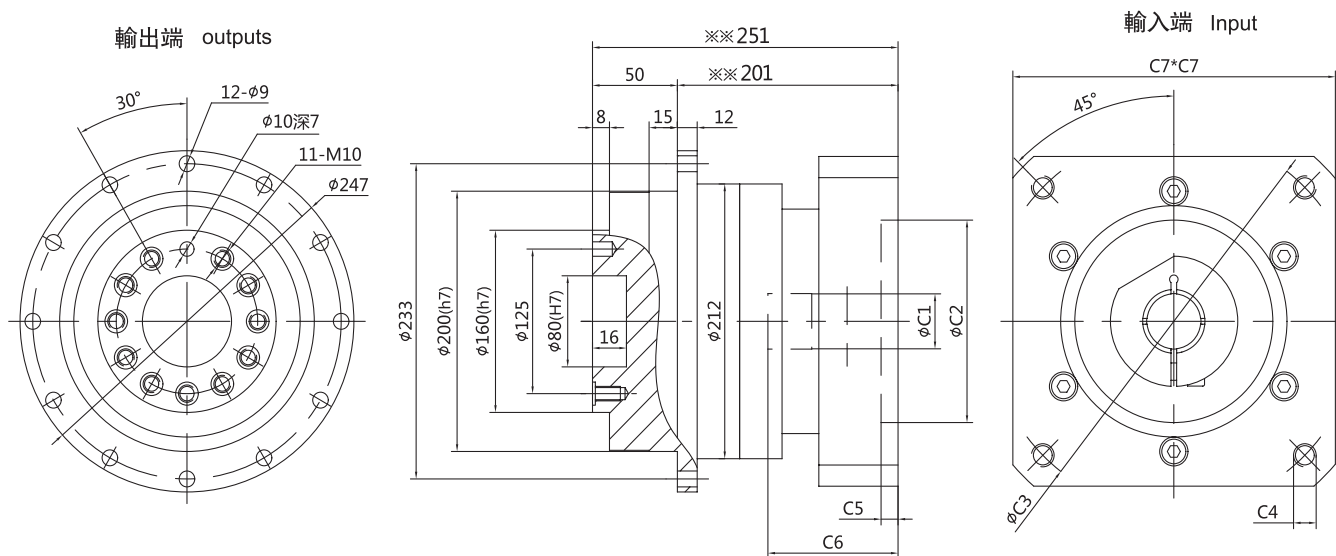
1. 帶※尺寸可依據馬達實際尺寸定制, 如有需要請聯系我司。
2. 帶※※為最大尺寸, 隨安裝馬達的不同而尺寸會有所變化。

Note:

1. “※” The size can be customized according to the actual size of the motor. Please contact our company if necessary
2. “※※” For maximum size, the mounting motors vary in size.



● BD200A-L1 (一段)



單位: mm

| 馬達記號 Motor Mark 輸入端尺寸 Input Size | S1 | S2 | S3 | S4 | S5 | S6 | S7 | S8 |
|---|-----|-----|-----|-----|-----|-----|-------|-------|
| ※C1(H) | 19 | 22 | 22 | 24 | 28 | 32 | 35 | 42 |
| ※C2(H) | 110 | 110 | 110 | 110 | 110 | 130 | 114.3 | 114.3 |
| ※C3 | 145 | 130 | 145 | 145 | 145 | 165 | 200 | 200 |
| ※C4 | M8 | M8 | M8 | M8 | M8 | M10 | M12 | M12 |
| ※C5 | 8 | 8 | 8 | 8 | 8 | 8 | 8 | 8 |
| ※C6 | 74 | 74 | 74 | 74 | 74 | 82 | 82 | 82 |
| ※C7 | 130 | 130 | 130 | 130 | 130 | 180 | 180 | 180 |

注:

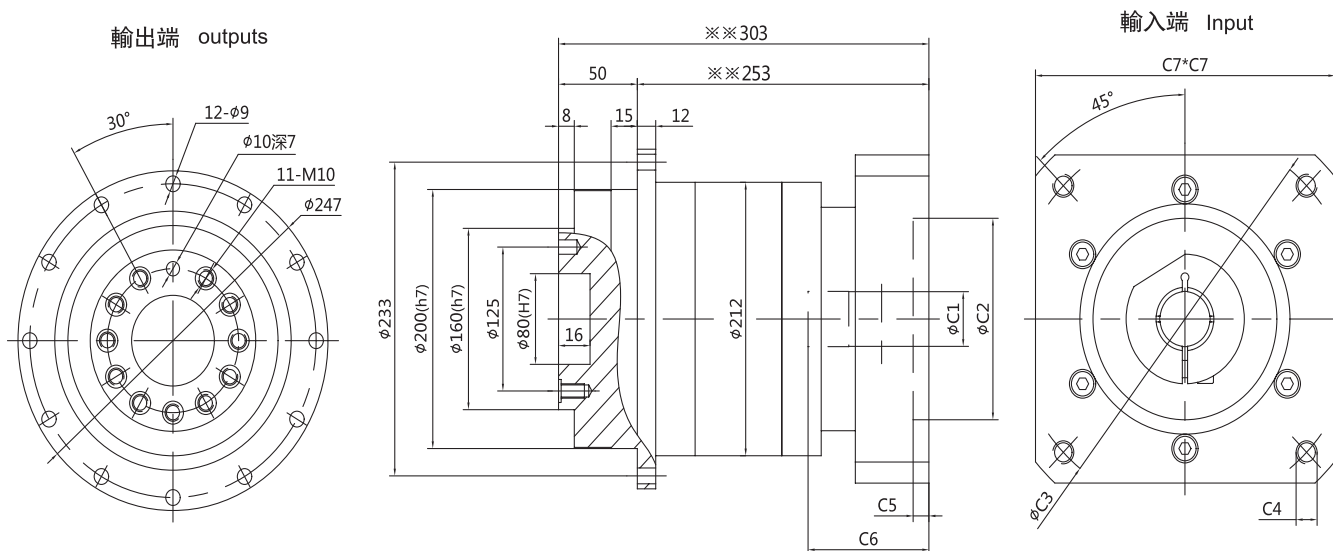
1. 帶※尺寸可依據馬達實際尺寸定制, 如有需要請聯系我司。
2. 帶※※為最大尺寸, 隨安裝馬達的不同而尺寸會有所變化。

Note:

1. “※” The size can be customized according to the actual size of the motor. Please contact our company if necessary
2. “※※” For maximum size, the mounting motors vary in size.



● BD200A-L2 (二段)



單位: mm

| 馬達記號 Motor Mark 輸入端尺寸 Input Size | S1 | S2 | S3 | S4 | S5 | S6 | S7 | S8 |
|---|-----|-----|-----|-----|-----|-----|-------|-------|
| ※C1(H) | 19 | 22 | 22 | 24 | 28 | 32 | 35 | 42 |
| ※C2(H) | 110 | 110 | 110 | 110 | 110 | 130 | 114.3 | 114.3 |
| ※C3 | 145 | 130 | 145 | 145 | 145 | 165 | 200 | 200 |
| ※C4 | M8 | M8 | M8 | M8 | M8 | M10 | M12 | M12 |
| ※C5 | 8 | 8 | 8 | 8 | 8 | 8 | 8 | 8 |
| ※C6 | 74 | 74 | 74 | 74 | 74 | 82 | 82 | 82 |
| ※C7 | 130 | 130 | 130 | 130 | 130 | 180 | 180 | 180 |

注:

1. 帶※尺寸可依據馬達實際尺寸定制，如有需要請聯系我司。
2. 帶※※為最大尺寸，隨安裝馬達的不同而尺寸會有所變化。

Note:

1. “※” The size can be customized according to the actual size of the motor. Please contact our company if necessary
2. “※※” For maximum size, the mounting motors vary in size.